

Participants in the Summer Seminar will:

- Interact with Yale scholars who model faithful presence.
- Learn to diagnose obstacles and opportunities for faithful Christian witness in the classroom and in your research.
- Participate in a community of mission minded scholars from around the country.

Our aim will be to lay a biblical, theological, and practical foundation to help you inhabit your calling faithfully with the mind and the mission of Christ.

Information

Cost: \$1000

Includes all expenses except transportation

Room and Board will be provided on the Yale University Campus

For information and application materials

rivendellinstitute.org/summerseminar

Applications deadline: March 15, 2012
Applicants will be notified by May 1, 2012

Comments from past participants

Brad - PhD candidate, *Duke*

Participating in the Rivendell Summer Seminar gave me exactly the boost I needed before pursuing an advanced degree in sociology. The project introduced me to a network of Christian scholars, helped me establish a solid spiritual base, and provided an intellectual framework for pursuing my research.

Luke - Ph.D. candidate, *Notre Dame*

My time with The Rivendell Institute was in many ways the most important two weeks of my professional and spiritual life. Each member of the team specializes in thinking strategically along academic, cultural, and missional trajectories -- and they've spent a lifetime honing the process of training others. They are models of what a biblically faithful and strategic presence in the academy can look like.



RIVENDELL INSTITUTE AT YALE
16 Lynwood Place, New Haven, CT 06511
T: (203) 785-0164
E: info@rivendellinstitute.org

RIVENDELL SUMMER SEMINAR

2012



**Cultivating a Faithful Presence:
The Richness of the Gospel in the Life
of the Academy**

sponsored by

The Rivendell Institute at Yale

Sunday, June 3 - Saturday June 16, 2012

**Yale University
New Haven, Connecticut**



The Rivendell Summer Seminar is a two week summer institute exploring the theme *Cultivating a Faithful Presence: the Richness of the Gospel in the Life of the Academy*. Hosted on the campus of Yale University by the Rivendell Institute at Yale, a select group of graduate and advanced undergraduate students in the humanities and social sciences will gather for instruction, development and encouragement.

Critical issues to be explored include:

- The contours of faithfulness for a follower of Christ in an academic context.
- The guiding convictions that should inform our engagement with the academy.
- The practices and values that constitute a fruitful presence in the university.
- Scriptural models for integrating Christian faith and mission with the calling of scholars and teachers.

THE RIVENDELL SUMMER SEMINAR

The seminar is built around four modules:

Biblical Foundations – Foundational for a faithful inhabiting of the academy is a compelling, Biblically- rooted vision. Through an examination of key passages we will cultivate the personal vision which flows from the rich fabric of Scriptural principle and apostolic example.

The Anatomy of Theology – One of the chief challenges to integrating faith with the calling of the scholar is a shallow understanding of the theological landscape. This module will develop your ability to speak theologically into your discipline.

Becoming a Gospel Diagnostician – In this module we shall explore how to diagnose the quality of the soil in your chosen field. We will learn to recognize both those features of the university that offer resistance and receptivity to the gospel.

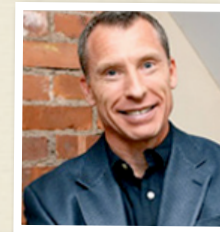
Theological Reasoning – Integrating Christianity with our disciplines begins with an exploration of the relationship between theological truths and non-theological areas of inquiry. The focus of this module is the coordination of various academic problems to the corresponding theological loci, and the consideration of the theological implications of certain non-theological discourses.

Primary instructors:



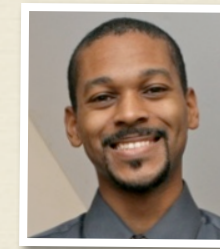
Greg Ganssle
(Ph.D. Syracuse,
Philosophy)

Senior Fellow, Rivendell Institute
Part-time Lecturer, Philosophy, Yale University



Jon Hinkson
(M.Phil. Divinity –
Church History,
Cambridge University)

Senior Fellow, Rivendell Institute



Junius Johnson
(Ph.D. Yale,
Theology)

Research Fellow, Rivendell Institute
Lecturer, Medieval Latin and Theology,
Yale Divinity School
Research Associate, Medieval Theology,
University of the Free State, South Africa